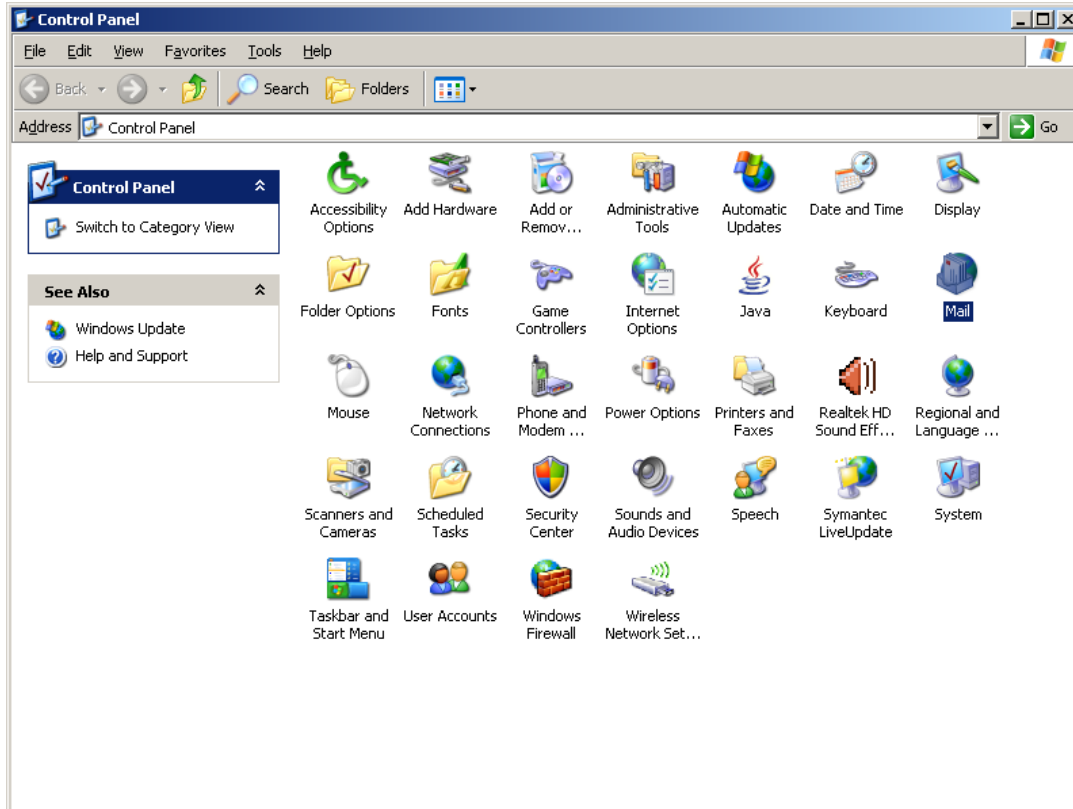


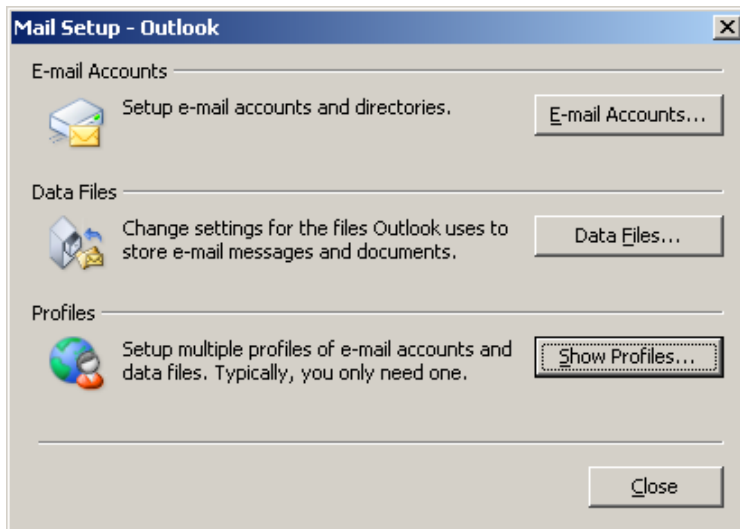
Configuring RPC over HTTP in Outlook 2003

Perform the following steps to create the Outlook 2003 profile:

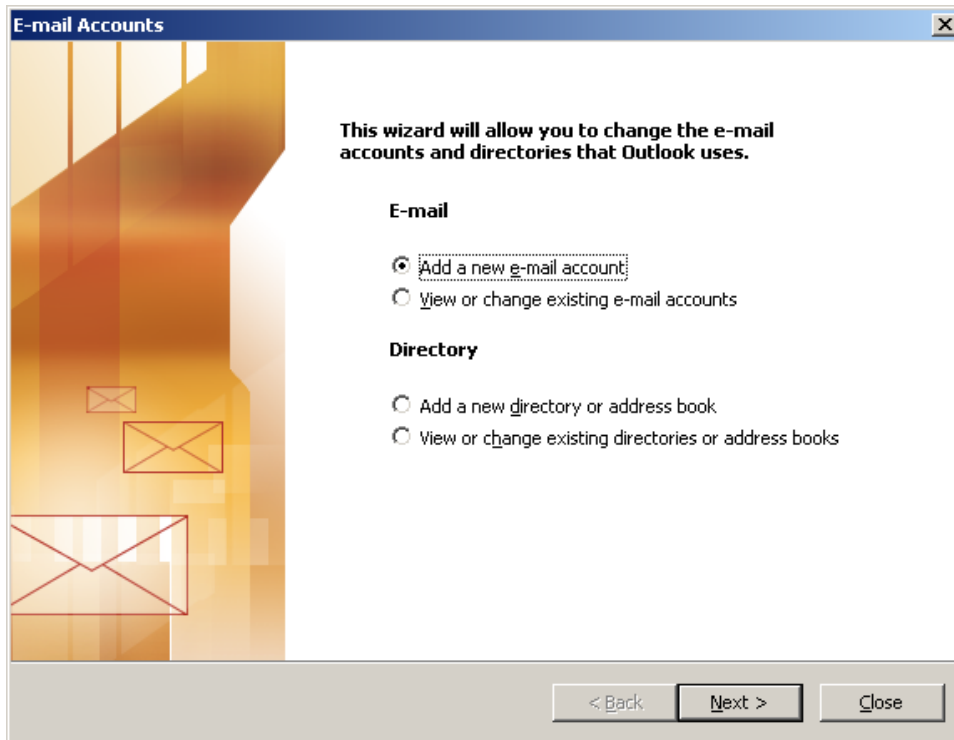
1. Open Control Panel



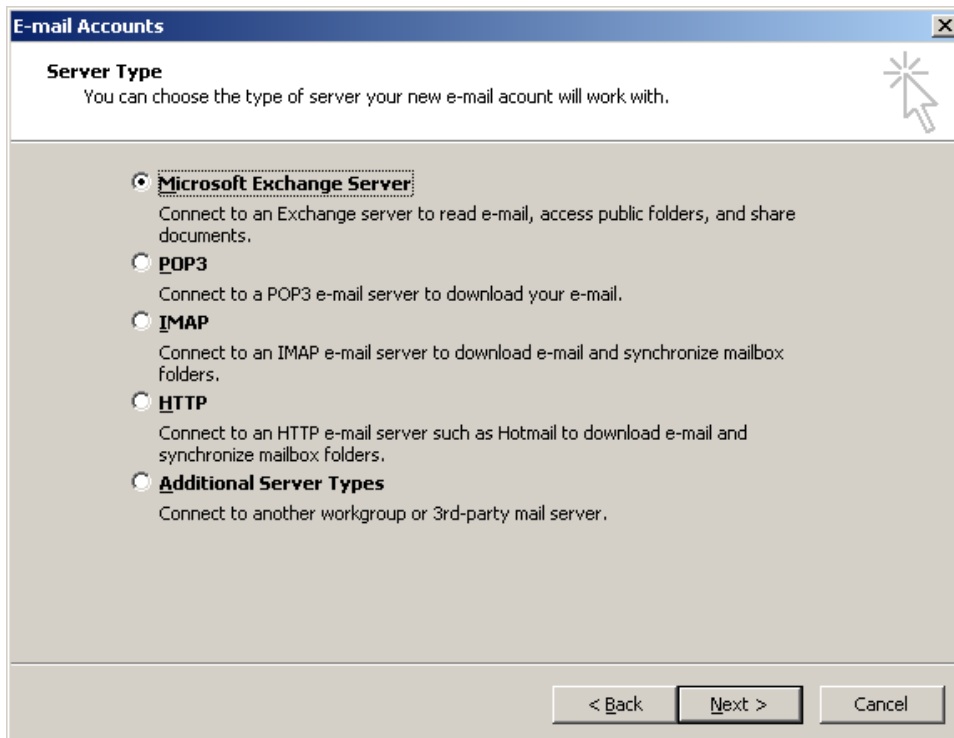
2. Double Click on Mail



3. Select the option “Add a new e-mail account” and hit Next button



4. Choose “Microsoft Exchange Server” for the type of server and click Next



5. Enter the details as entered in the below screenshot and select “More Settings”.

*** Please DO NOT CLICK on “Check Name” button on this screen.**

E-mail Accounts [X]

Exchange Server Settings

You can enter the required information to connect to your Exchange server.

Type the name of your Microsoft Exchange Server computer. For information, see your system administrator.

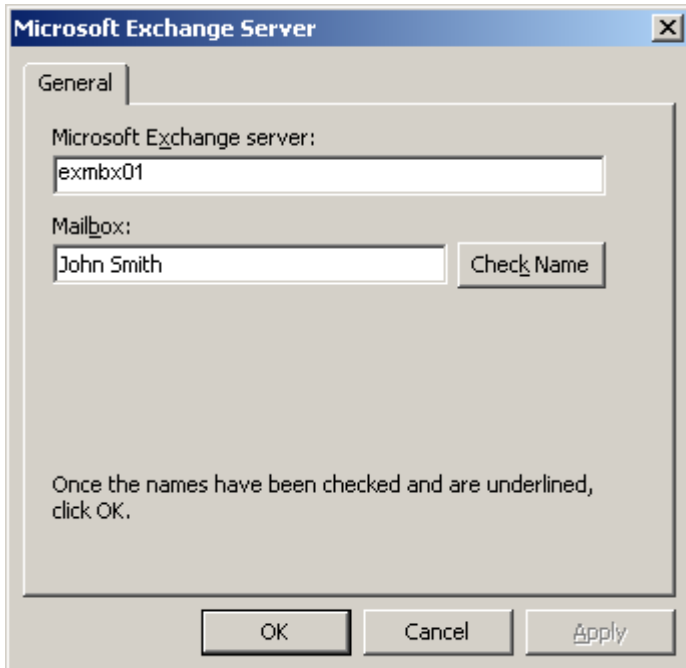
Microsoft Exchange Server:

Use Cached Exchange Mode

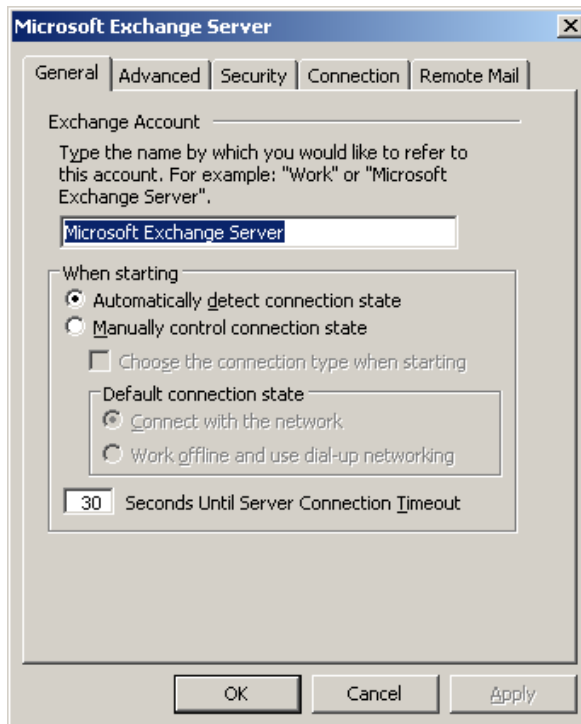
Type the name of the mailbox set up for you by your administrator. The mailbox name is usually your user name.

User Name:

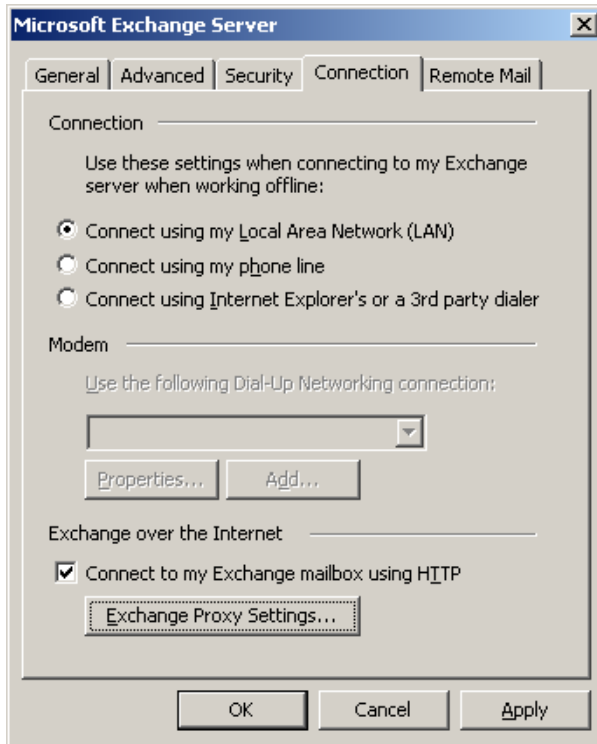
6. In the next screen, please click **CANCEL**



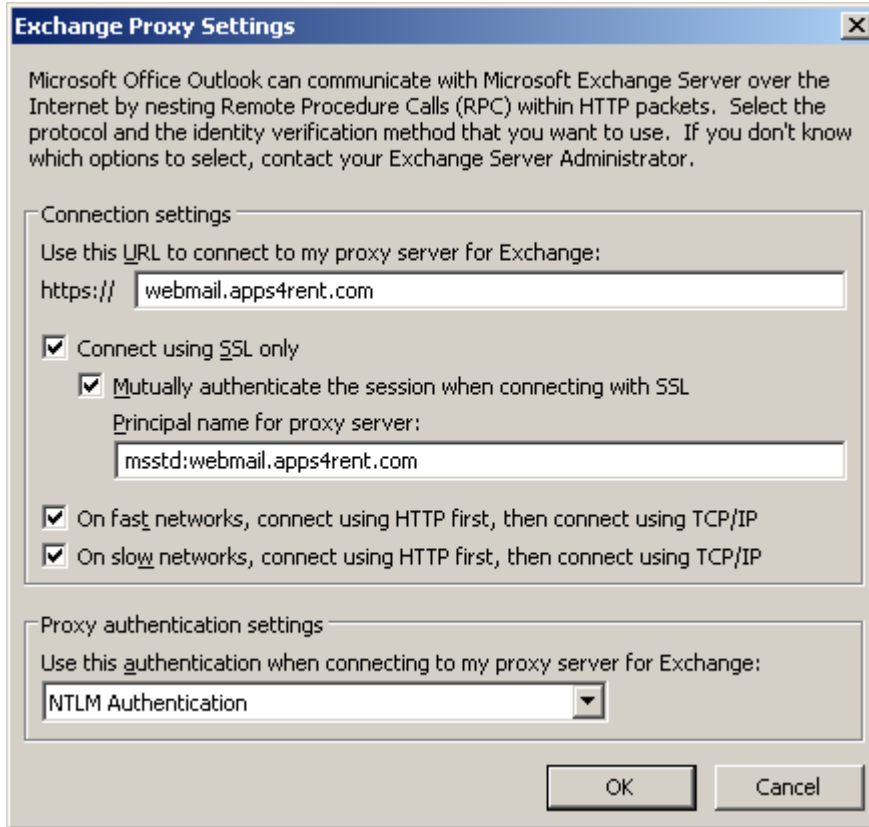
7. The below screen appears, choose the fourth tab "Connection"



8. In the connection tab, put a check mark on “Connect to my Exchange mailbox using HTTP” & click on “Exchange Proxy Settings”



9. In the next screen, enter the details as shown below



The image shows a dialog box titled "Exchange Proxy Settings" with a close button (X) in the top right corner. The dialog contains the following text and controls:

Microsoft Office Outlook can communicate with Microsoft Exchange Server over the Internet by nesting Remote Procedure Calls (RPC) within HTTP packets. Select the protocol and the identity verification method that you want to use. If you don't know which options to select, contact your Exchange Server Administrator.

Connection settings

Use this URL to connect to my proxy server for Exchange:
https://

Connect using SSL only
 Mutually authenticate the session when connecting with SSL
Principal name for proxy server:

On fast networks, connect using HTTP first, then connect using TCP/IP
 On slow networks, connect using HTTP first, then connect using TCP/IP

Proxy authentication settings

Use this authentication when connecting to my proxy server for Exchange:

At the bottom right, there are two buttons: "OK" and "Cancel".

10. Click OK to complete configuration.